



MONTHLY MEMBERSHIP PROGRESS REPORT

District 105 D

Results as of: 11/30/2015

GMT: Elisabeth Haderer

LOCATION ENGLAND

GMT CA 4

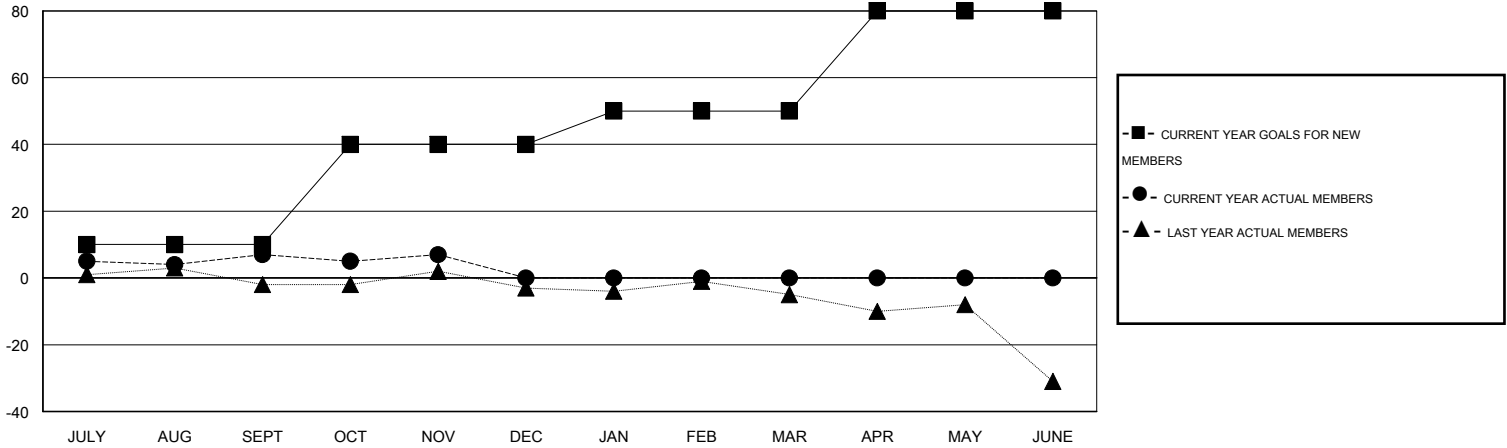
Clubs				
RESULTS FOR 2015-2016				
QUARTER	NEW CLUB GOAL	NEW CLUBS	DROPPED CLUBS	NET GAIN/LOSS
JULY/AUG/SEPT	0	0	0	0
OCT/NOV/DEC	1	0	0	0
JAN/FEB/MAR	0	0	0	0
APR/MAY/JUNE	1	0	0	0

Members				
RESULTS FOR 2015-2016				
QUARTER	NEW MEMBER GOAL	CHARTER AND NEW MEMBERS ADDED	DROPPED MEMBERS	NET GAIN/LOSS
JULY/AUG/SEPT	10	34	27	7
OCT/NOV/DEC	30	18	18	0
JAN/FEB/MAR	10	0	0	0
APR/MAY/JUNE	30	0	0	0

GOALS AND ACTUAL NEW CLUBS CUMULATIVE



GOALS AND ACTUAL MEMBERS CUMULATIVE



DROPPED CLUBS: 0	26 CLUBS OF 61 ADDED 1 OR MORE NEW MEMBERS	<u>GENDER DISTRIBUTION</u>	
<u>DROPPED MEMBERS</u>		MALE	863 (69.60%)
DECEASED	4	FEMALE	377 (30.40%)
CLUB CANCELLED	0	<u>FAMILY UNIT MEMBERS</u> 167	
OTHER	41	<u>HEAD OF HOUSEHOLD</u> 83	
TOTAL	45	<u>NON-HEAD OF HOUSEHOLD</u> 84	

[CLICK HERE FOR HEALTH ASSESSMENT DATA](#)